

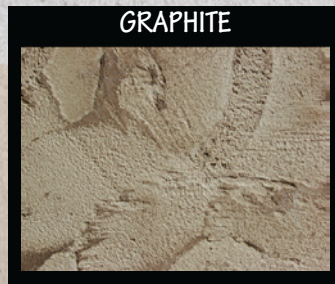
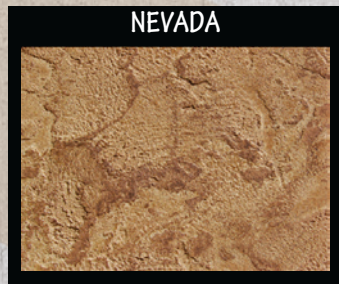
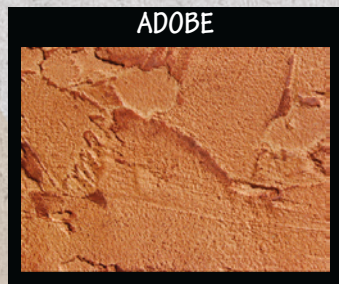
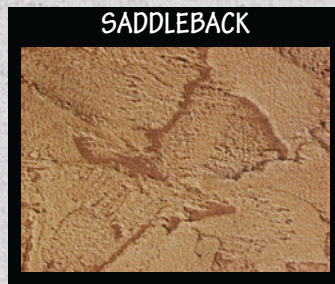
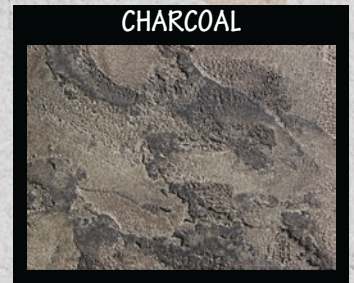
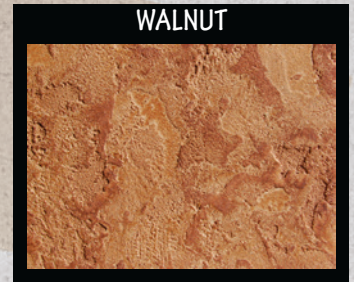
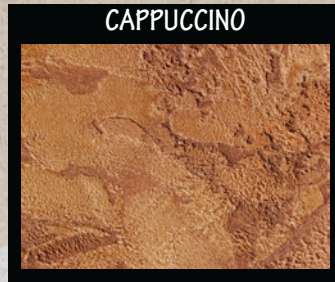
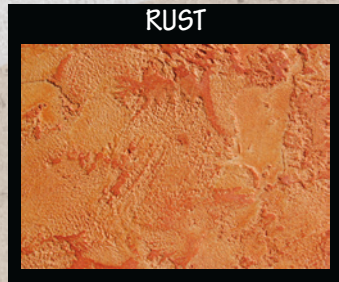
# G

**GRANICRETE  
INTERNATIONAL**

*What's in your portfolio?*

# Acrylic Concrete Stains

Actual color may vary from the printed version of this chart or as viewed online pending either the printer and monitor used. Actual color may vary pending amount of concentrate used, porosity of texture, and method of applying color.



*Blended  
Colors*

See back for recipes

# ACRYLIC CONCRETE STAINS

## Blended Color Ratios

<b>Bermuda</b>	
Rust	1 Part
Meadow	1 Part
Water	2 Parts

<b>Sage</b>	
Maize	1 Part
Meadow	1 Part
Water	2 Parts

<b>Adobe</b>	
Rust	1 Part
Walnut	1 Part
Water	2 Parts

<b>Slate</b>	
Pewter	1 Part
Meadow	1 Part
Water	2 Parts

<b>Saddleback</b>	
Cappuccino	1 Part
Meadow	1 Part
Water	2 Parts

<b>Desert</b>	
Maize	1 Part
Walnut	1 Part
Water	2 Parts

<b>Graphite</b>	
Pewter	1 Part
Maize	1 Part
Water	2 Parts

<b>Nevada</b>	
Walnut	1 Part
Meadow	1 Part
Water	2 Parts

<b>Leather</b>	
Maize	1 Part
Cappuccino	1 Part
Water	2 Parts

## Additional Stain Colors to Beautify any Floor!

*Colors formulated above are applied over Granicrete white texture and are intended to provide a general color.  
Color may vary due to application technique, moisture content, cure time and other variables.*